



ELEVATING YOUR
horizon

3 BHK CLASSIC LIVING • COMMERCIAL SPACES



More than a decade in the real estate industry, Rudram Group is a group that spells a classy edge. Be it the projects that it boasts of or the count of satisfied customers that it encompasses, the group always moves ahead with a renewed vigor to present the best to its clients.

From day one with a resolve to create magical moments and beautiful memories for its esteemed customers, Rudram Group takes each project as an opportunity to create an edge of excellence and marvellousness.

With residential and commercial projects at the most plush locations in Ahmedabad the group envisions broadening its horizons far and wide, covering Gujarat with its fascinating facades and incredible perfection with its turnkey projects.

Looking for a builder who spells trust, quality and innovative streak? Welcome to Rudram Group!

Our Achievements



Commercial Complex
@ Kadi



BUNGALOWS
@ Kadi



BUNGALOWS
@ Kadi



BUNGALOWS
@ Kadi



BUNGALOWS
@ Kadi



1 & 2 BHK FLATS & SHOPS
@ New Ranip, Ahmedabad.



SHOPS & OFFICES
@ Gota, Ahmedabad.



2 & 3 BHK Apartments & Commercial
@ Gota, Ahmedabad.





MARDCR

REVOLUTIONARY DESIGNS FOR A REVOLUTIONARY LIFESTYLE

Create a blissful world of your dreams



Separate Entry Gate for Commercial & Residential
CCTV Camera | Basement Parking | 24 x 7 Security | Entrance Foyer

THE IDEAL
LOCATION

SHASTRI NAGAR
CROSS ROAD

SARDAR PATEL
SOCIETY



GAURAV PATH

TO PRABHATI CHOWK





A HUB FOR RECREATION &
INNOVATION



LOCATION WITH
2 ROAD CORNER



RUDRAM SKYLINE



RETAIL
SHOWROOMS
OFFICES

At Ground to 3rd in front of 30 Mt. Wide Main Road

A glorious epitome of elegance that encompasses all your needs and wants. Elite design for a lavish lifestyle only for the select few

PROJECT HIGHLIGHTS

COMMERCIAL COMPLEX

- G + 2 floor showrooms space
- + 3 Floor offices with balcony

RESIDENTIAL PROJECT

- G + 1 Floor retail space
- 12 storied 2 residential towers with pent house
- Thoughtfully planned 3 BHK residences
- Sufficient open green space
- All lavish lifestyle amenities





AMENITIES


ELEGANT
WATER BODY


WELL EQUIPPED
GYMNASIUM


MULTIPURPOSE
HALL


GAZEBO WITH
SEATING


CHILDREN'S
PLAY AREA


SENIOR CITIZEN
SITTING SPACE


POWER BACK-UP
(COMMON AREA)


LARGE SIZE
PARTY LAWN



OPEN AIR
AMPHITHEATRE


VIDEO DOOR
PHONE


INDOOR
GAME ZONE


WALKING TRACK
AROUND GARDEN


ELEGANT
CLUB - HOUSE


TWO LIFTS
IN EACH BLOCK



LEGENDS

- 01 WATER CASCADE AT THE ENTRANCE
- 02 SECURITY CABIN
- 03 TRIMIX WITH BROOMING PATTERN / GRANITE
- 04 WATER CASCADE
- 05 CHILDREN'S PLAY AREA
- 06 JOGGING TRACK
- 07 OPEN AIR AMPHITHEATRE WITH PERGOLA ON SEATING
- 08 HARD SCAPE WITH PLANTATION AND PEBBLE
- 09 SENIOR CITIZEN SEATING SPACE
- 10 SCULPTURE POINT
- 11 WATER BODY
- 12 PARTY LAWN
- 13 GAZEBO WITH SEATING SPACE



GROUND FLOOR PLAN



18 MT WIDE ROAD

30 MT WIDE ROAD



ALL YOUR DREAMS CAN
NOW COME TRUE

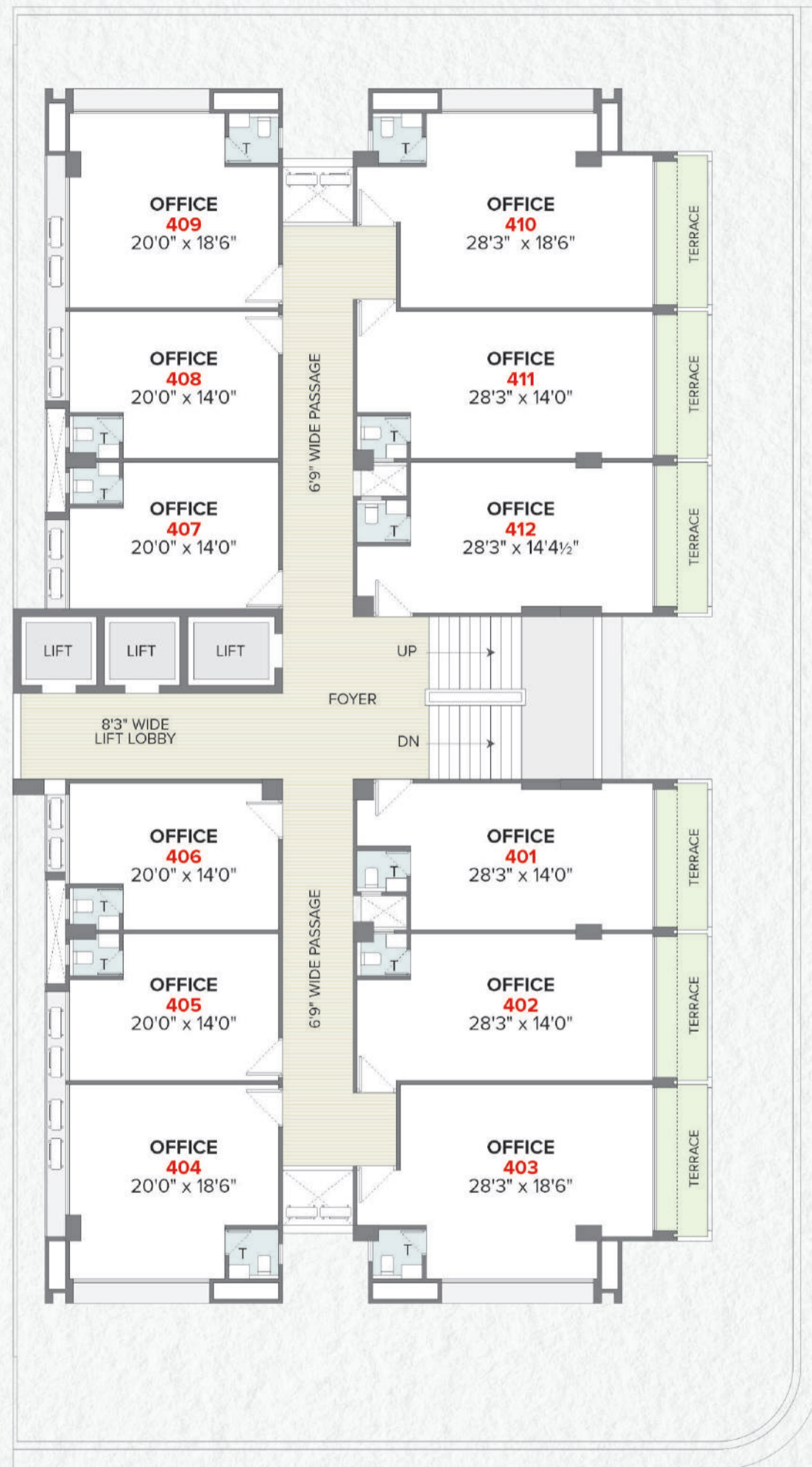




30 MT WIDE ROAD

18 MT WIDE ROAD





FOURTH FLOOR PLAN 



FIFTH FLOOR PLAN 



30 MT. WIDE ROAD

18 MT. WIDE ROAD

TYPICAL FLOOR PLAN



SPECIFICATIONS



FLOORING

- Good quality vitrified & flooring



WALL FINISH

- Internal wall mala plaster with putty
- External wall double coat plaster with texture



ELECTRIFICATION

- Modular switches
- Concealed wiring
- Sufficient electric points in all rooms



WINDOW

- Jindal or equivalent brand for aluminum section with glass
- Granite stone sill



KITCHEN

- Granite platform with SS sink
- Tiles dado upto lintel level



PLUMBING

- Under ceiling concealed modern plumbing
- ISI UPVC plumbing pipes



BATHROOM/TOILET

- Premium bath fittings of reputed brand
- Ceramic tiles on wall & anti skid tile of floor



DOOR

- Attractive Main Door with wooden frame
- All other are flush doors





COMFORT MEETS GRANDEUR IN
HOMES DESIGNED FOR THE ELITE

Relax in the peaceful haven that is your home, and enjoy the true touch of luxury with the view of the city skyline as a backdrop to your lavish life.



3 BHK
UNIT FLOOR PLAN

BLOCK - A

UNIT NO. : 201 TO 1101, 202 TO 1102,
203 TO 1103, 204 TO 1104

TYPE - 01

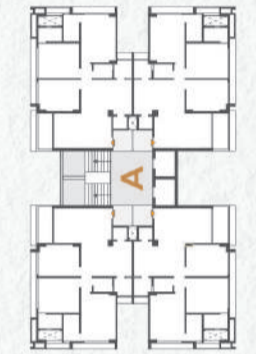
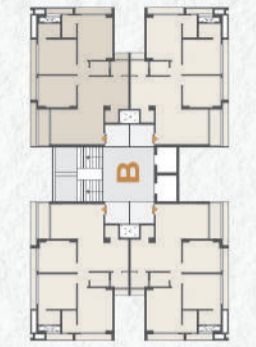


3 BHK
UNIT FLOOR PLAN

BLOCK - B

UNIT NO. : 201 TO 1101, 202 TO 1102,
203 TO 1103, 204 TO 1104

TYPE - 02



3 BHK

UNIT FLOOR PLAN

BLOCK - A

UNIT NO. : 1201 & 1202

PENTHOUSE 01



PENTHOUSE 02

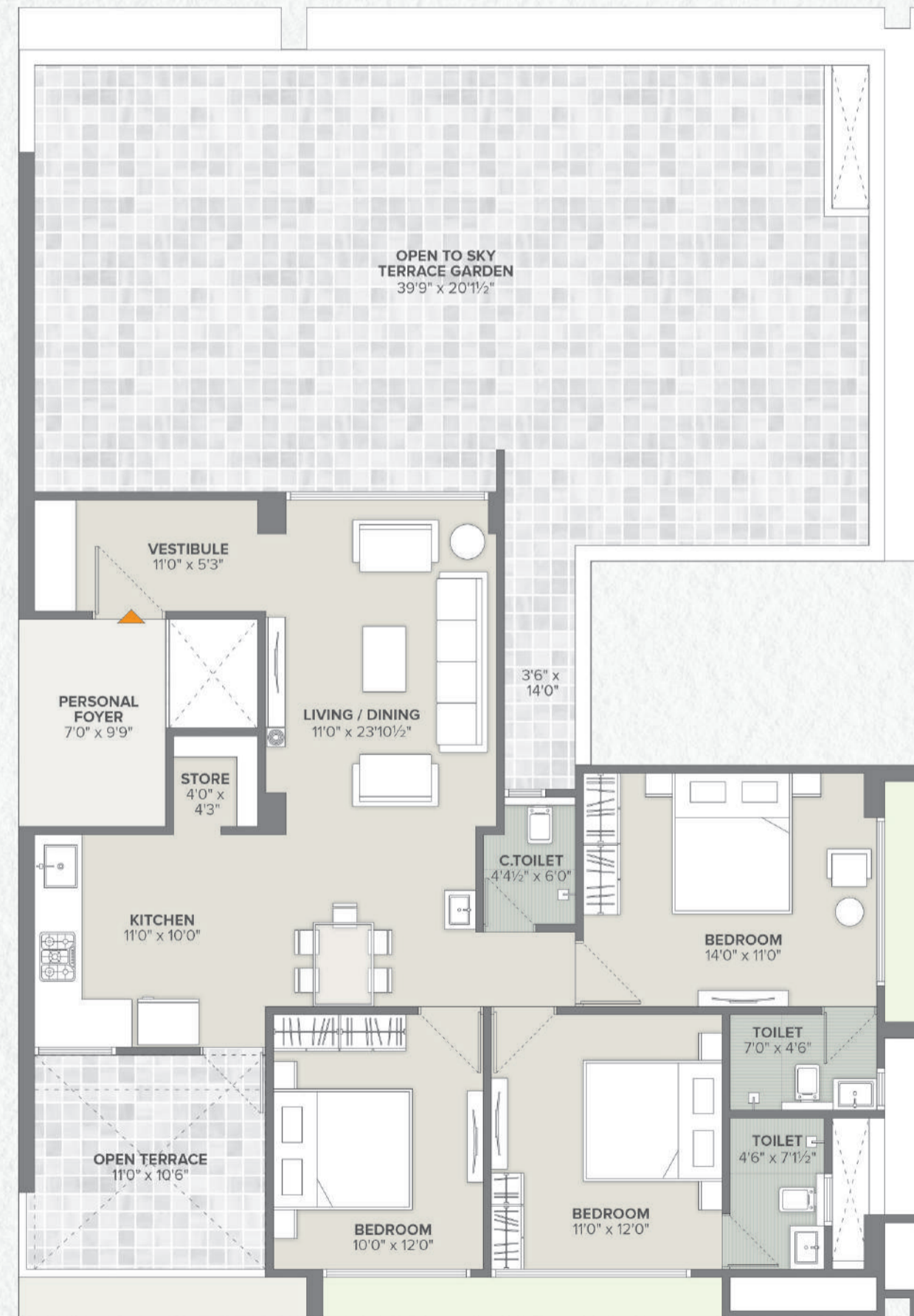


3 BHK

UNIT FLOOR PLAN

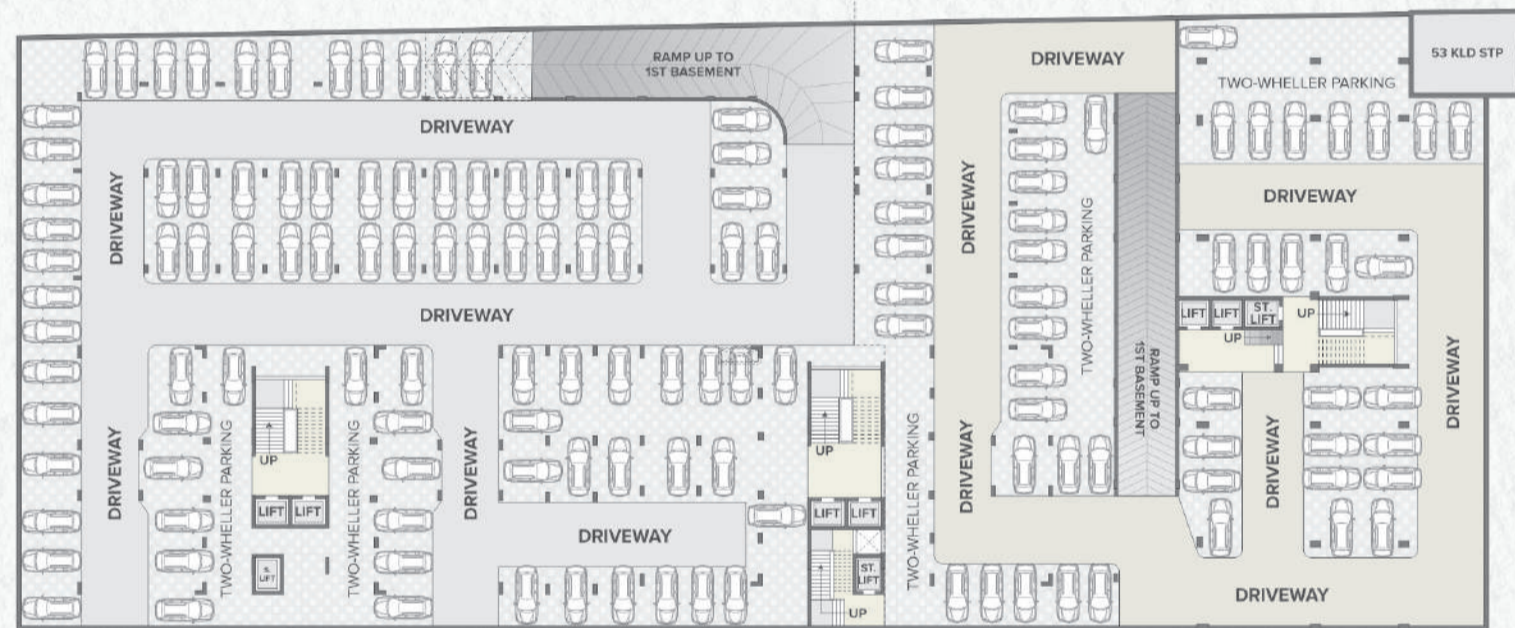
BLOCK - B

UNIT NO. : 1201 & 1202





BASEMENT 01



BASEMENT 02



LOCATION

PLEASE NOTE : ● Stamp Duty, Registration Charges, Legal Charges, GST, AMC Charges & Ele. Co. Charges for Cable and sub-station Cost etc shall be borne by the purchaser ● Any additional charges or duties levied by the Government / Local authorities during or after the completion of the project will be borne by the purchaser ● Changes / Alteration of any nature including the elevation, Exterior colour scheme of the building or any other change affecting the overall design concept and outlook of the project strictly NOT PERMITTED during or after the completion of the project ● Membership of member will be cancelled automatically who will be unable to make payment in-time and deposited amount will be refunded only after new booking with 20% deduction of unit cost as administration charges ● Details & dimension in model & brochure are indicative and for the tentative representation only which should not be treated as legal documents or consumer contract.





Site Address: Rudram Skyline, Opp. Rannapark Bus Stop,
Near Satya Two, Gauravpath, Ghatlodiya, Ahmedabad 380061.


For More Information: +91 90812 29944, 90812 29922

RERA : PR/GJ/AHMEDABAD/AHMEDABAD CITY/AUDA/MAA12122/070723
Website : www.gujrera1.gujarat.gov.in

DEVELOPER **RUDRAM**
Infrastructure

ARCHITECT 
SURESH SUTHAR ARCHITECTS

STRUCTURE **D.H.PATEL**

 E-CUBE 97129 06003